

# Surface Mount Frequency Mixer

## ADE-5+ ADE-5

Level 7 (LO Power +7 dBm) 5 to 1500 MHz



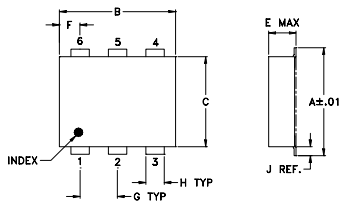
### Maximum Ratings

Operating Temperature	-40°C to 85°C
Storage Temperature	-55°C to 100°C
RF Power	50mW
IF Current	40mA

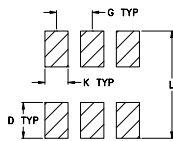
### Pin Connections

LO	6
RF	3
IF	2
GROUND	1,4,5

### Outline Drawing



### PCB Land Pattern

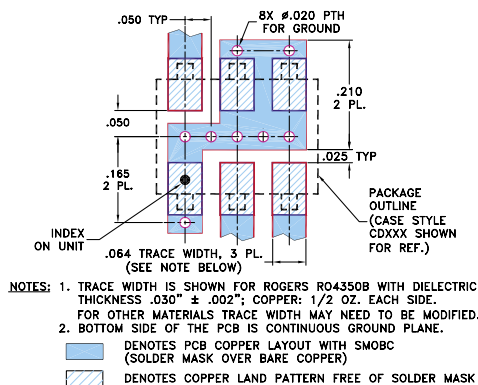


Suggested Layout,  
Tolerance to be within ±.002

### Outline Dimensions (inch)

A	B	C	D	E	F	G
.272	.310	.220	.100	.112	.055	.100
6.91	7.87	5.59	2.54	2.84	1.40	2.54
H	J	K	L	wt		
.030	.026	.065	.300	grams		
0.76	0.66	1.65	7.62	0.20		

### Demo Board MCL P/N: TB-03 Suggested PCB Layout (PL-052)



### Features

- low conversion loss, 6.6 dB typ.
- excellent L-R isolation, 40 dB typ.
- excellent IP3, 15 dBm
- aqueous washable
- protected by U.S. Patent 6,133,525

### Applications

- cellular
- PCS

CASE STYLE: CD542

PRICE: \$3.45 ea. QTY (10-49)

+ RoHS compliant in accordance  
with EU Directive (2002/95/EC)

The +Suffix identifies RoHS Compliance. See our web site  
for RoHS Compliance methodologies and qualifications.

### Electrical Specifications

FREQUENCY (MHz)	CONVERSION LOSS (dB)	LO-RF ISOLATION (dB)			LO-IF ISOLATION (dB)			IP3 at center band (dBm)	
		L	M	U	L	M	U		
LO/RF $f_L$ - $f_U$	Mid-Band $m$ $\bar{X}$ $\sigma$ Max.	Total Range Max.	Typ. Min.	Typ. Min.	Typ. Min.	Typ. Min.	Typ. Min.	Typ. Min.	Typ.
5-1500	DC-1000	6.6 0.10 7.5 9.3	50 40	40 25	33 23	50 40	30 20	20 10	15

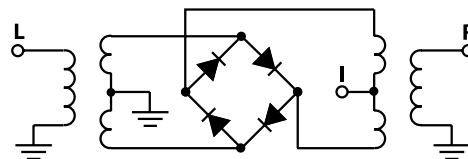
1 dB COMP.: +1 dBm typ.  
Phase detection, positive polarity

L = low range [ $f_L$  to 10  $f_L$ ] M = mid range [10  $f_L$  to  $f_U/2$ ] U = upper range [ $f_U/2$  to  $f_U$ ]  
m = mid band [2 $f_L$  to  $f_U/2$ ]

### Typical Performance Data

Frequency (MHz)		Conversion Loss (dB)	Isolation L-R (dB)	Isolation L-I (dB)	VSWR RF Port (:1)	VSWR LO Port (:1)
RF	LO	LO +7dBm	LO +7dBm	LO +7dBm	LO +7dBm	LO +7dBm
5.0	35.0	7.0	63.9	53.6	1.59	1.91
10.0	40.0	6.6	63.2	52.2	1.51	1.94
50.0	80.0	6.5	56.7	46.6	1.39	1.91
100.0	130.0	6.6	52.7	41.7	1.38	1.91
197.1	227.1	6.7	49.0	36.3	1.41	1.94
295.6	325.6	6.6	47.3	33.5	1.40	2.01
394.1	424.1	6.7	43.7	32.0	1.39	2.20
492.6	522.6	6.5	42.4	30.7	1.35	2.40
500.0	530.0	6.6	41.9	30.5	1.34	2.37
591.1	621.1	6.6	39.7	29.9	1.35	2.40
689.6	719.6	6.6	36.8	28.5	1.28	2.32
788.1	818.1	6.6	35.2	26.0	1.23	2.30
886.6	916.6	6.5	33.4	23.5	1.14	2.32
985.1	1015.1	6.4	33.2	21.8	1.09	2.49
1000.0	1030.0	6.5	33.5	21.5	1.11	2.58
1182.0	1212.0	6.6	35.6	20.4	1.50	2.88
1280.5	1310.5	7.1	36.3	19.2	1.81	2.92
1379.0	1409.0	7.6	34.3	17.9	2.10	2.92
1477.5	1507.5	8.2	31.2	17.1	2.37	2.88
1500.0	1530.0	8.2	30.5	16.8	2.46	2.96

### Electrical Schematic



**Mini-Circuits**  
ISO 9001 ISO 14001 CERTIFIED

ALL NEW  
minicircuits.com

P.O. Box 350166, Brooklyn, New York 11235-0003 (718) 934-4500 Fax (718) 332-4661 For detailed performance specs & shopping online see Mini-Circuits web site



The Design Engineers Search Engine Provides ACTUAL Data Instantly From MINI-CIRCUITS At: [www.minicircuits.com](http://www.minicircuits.com)

RF/IF MICROWAVE COMPONENTS

REV. D  
M102713  
ADE-5  
ED-7007/1  
DJ/TD/CP/AM  
070412  
Page 1 of 2

# Performance Charts

# ADE-5+ ADE-5

